

# PULSE DASHBOARD™

## How to Use the Format Option in Pulse Dashboard

Numeric columns in Pulse Dashboard can be formatted to include the number of decimal places shown, percent signs and currency values. This can be for existing columns listed in the Column Chooser or new columns created by using a custom formula. This can be setup by any User in Pulse Dashboard.

In the Column Chooser any numeric or currency value column may be displayed as a currency value, a numeric value or as a percentage. Date values may also have an alternate format if needed. Each of these may also be formatted to use the maximum decimal places as defined by Macola in the database.

In the examples below an Inventory Stock Status has been used to show the same report with standard formatting and with custom formatting. Values entered in the Format column in the Column Chooser control the display of the values on the report for that column.

### Standard Formatting:

The screenshot shows the 'Column Chooser' window in Pulse Dashboard. The 'Format' column is highlighted with a red circle. The 'Format' column contains a dropdown menu with options for formatting numeric and currency values. The 'Format' column is currently set to 'None' for all columns.

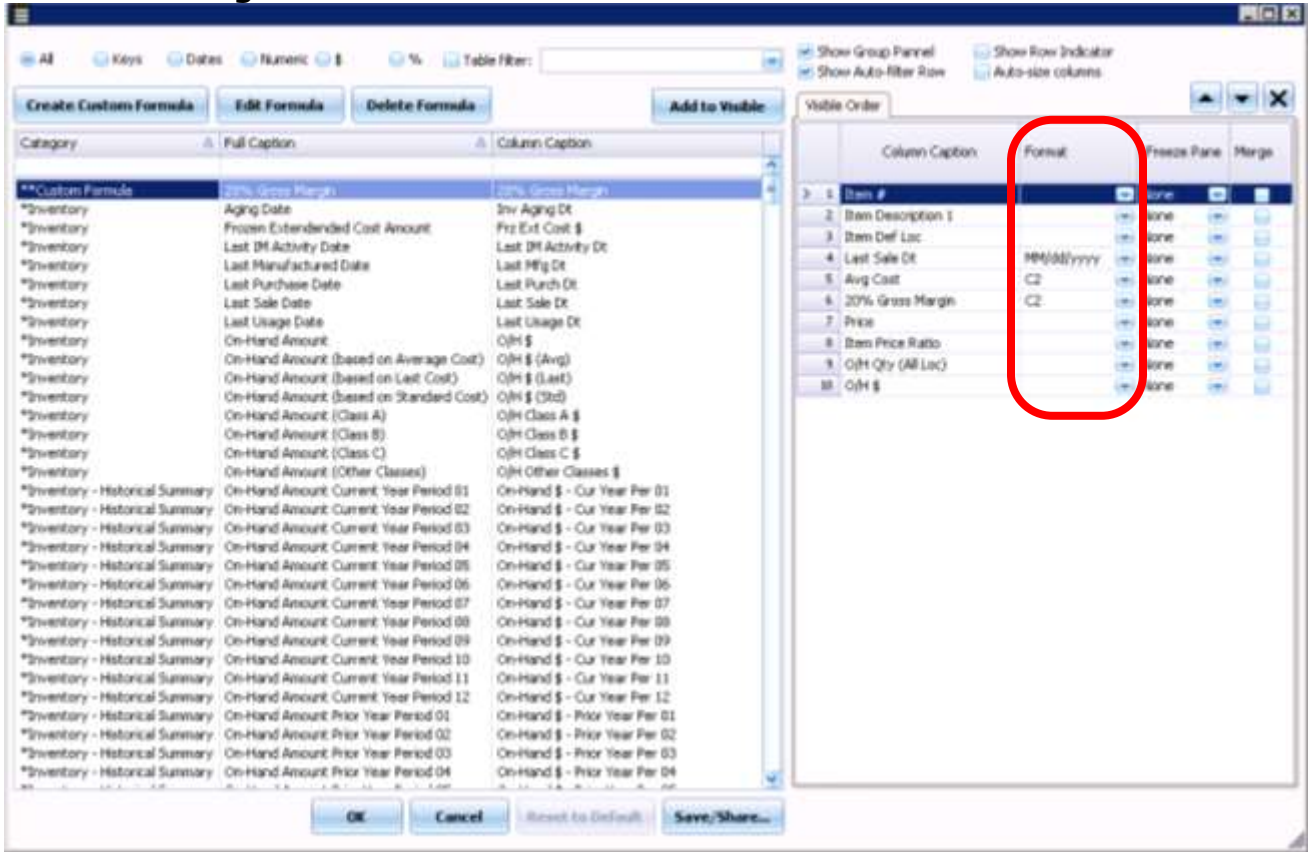
| Category                        | Full Caption                            | Column Caption               | Format | Freeze Pane | Merge |
|---------------------------------|---|------------------------------|--------|-------------|-------|
| *Custom Formula                 | 20% Gross Margin                        | 20% Gross Margin             | None   |             |       |
| *Inventory                      | Aging Date                              | Inv Aging Dt                 | None   |             |       |
| *Inventory                      | Frozen Extended Cost Amount             | Frz Ext Cost \$              | None   |             |       |
| *Inventory                      | Last IM Activity Date                   | Last IM Activity Dt          | None   |             |       |
| *Inventory                      | Last Manufactured Date                  | Last Mfg Dt                  | None   |             |       |
| *Inventory                      | Last Purchase Date                      | Last Purch Dt                | None   |             |       |
| *Inventory                      | Last Sale Date                          | Last Sale Dt                 | None   |             |       |
| *Inventory                      | Last Usage Date                         | Last Usage Dt                | None   |             |       |
| *Inventory                      | On-Hand Amount                          | O/H \$                       | None   |             |       |
| *Inventory                      | On-Hand Amount (based on Average Cost)  | O/H \$ (Avg)                 | None   |             |       |
| *Inventory                      | On-Hand Amount (based on Last Cost)     | O/H \$ (Last)                | None   |             |       |
| *Inventory                      | On-Hand Amount (based on Standard Cost) | O/H \$ (Std)                 | None   |             |       |
| *Inventory                      | On-Hand Amount (Class A)                | O/H Class A \$               | None   |             |       |
| *Inventory                      | On-Hand Amount (Class B)                | O/H Class B \$               | None   |             |       |
| *Inventory                      | On-Hand Amount (Class C)                | O/H Class C \$               | None   |             |       |
| *Inventory                      | On-Hand Amount (Other Classes)          | O/H Other Classes \$         | None   |             |       |
| *Inventory - Historical Summary | On-Hand Amount Current Year Period 01   | On-Hand \$ - Cur Year Per 01 | None   |             |       |
| *Inventory - Historical Summary | On-Hand Amount Current Year Period 02   | On-Hand \$ - Cur Year Per 02 | None   |             |       |
| *Inventory - Historical Summary | On-Hand Amount Current Year Period 03   | On-Hand \$ - Cur Year Per 03 | None   |             |       |
| *Inventory - Historical Summary | On-Hand Amount Current Year Period 04   | On-Hand \$ - Cur Year Per 04 | None   |             |       |
| *Inventory - Historical Summary | On-Hand Amount Current Year Period 05   | On-Hand \$ - Cur Year Per 05 | None   |             |       |
| *Inventory - Historical Summary | On-Hand Amount Current Year Period 06   | On-Hand \$ - Cur Year Per 06 | None   |             |       |
| *Inventory - Historical Summary | On-Hand Amount Current Year Period 07   | On-Hand \$ - Cur Year Per 07 | None   |             |       |

### Standard Formatting:

The screenshot shows the 'Inventory Stock Status' report in Pulse Dashboard. The '20% Gross Margin' column is highlighted with a red box. The report displays the following data:

| Item #         | Item Description 1 | Item Def Loc | Last Sale Dt | Avg Cost    | 20% Gross Margin | Price   | Item Price Ratio | O/H Qty (All Loc) | O/H \$    |
|----------------|--------------------|--------------|--------------|-------------|------------------|---------|------------------|-------------------|-----------|
| 003-E3000-0054 | WHEEL              | CIN          | 8/13/14      | \$23.592250 | 28.7038          | \$38.15 | 100.00 %         | 0                 | \$0       |
| 003-E3409      | WHEEL              | CIN          | 7/14/14      | \$27.179321 | 30.3822588       | \$43.13 | 100.00 %         | 0                 | \$217     |
| 003-E3695-0054 | WHEEL              | CIN          | 4/17/14      | \$24.486981 | 27.4975648       | \$40.13 | 100.00 %         | 0                 | \$0       |
| 003-E5404      | WHEEL              | CIN          | 7/17/14      | \$24.846578 | 28.6252624       | \$43.74 | 100.00 %         | 0                 | \$0       |
| 003-E5413      | WHEEL              | CIN          | 7/14/14      | \$24.846414 | 27.9011312       | \$40.12 | 100.00 %         | 0                 | \$0       |
| 003-E5421      | WHEEL              | CIN          | 6/19/14      | \$25.208956 | 28.1894848       | \$40.12 | 100.00 %         | 1                 | \$25      |
|                |                    |              |              |             |                  |         |                  |                   | \$946,325 |

## Custom Formatting:



## Custom Formatting:

Block: Dishes w/ Formatting

Drag a column header here to group by that column

| Item #         | Item Description 1 | Item Def Loc | Last Sale Dt | Avg Cost | 20% Gross Margin | Price   | Item Price Ratio | O/H Qty (All Loc) | O/H \$    |
|----------------|--------------------|--------------|--------------|----------|------------------|---------|------------------|-------------------|-----------|
| 003-E3000-0054 | WHEEL              | CIN          | 06/13/2014   | \$23.59  | \$26.70          | \$39.15 | 100.00 %         | 0                 | \$0       |
| 003-E3409      | WHEEL              | CIN          | 07/14/2014   | \$27.17  | \$30.36          | \$43.13 | 100.00 %         | 8                 | \$217     |
| 003-E3695-0054 | WHEEL              | CIN          | 07/14/2014   | \$23.59  | \$26.70          | \$39.15 | 100.00 %         | 0                 | \$0       |
| 003-E5404      | WHEEL              | CIN          | 07/17/2014   | \$24.85  | \$28.63          | \$43.74 | 100.00 %         | 0                 | \$0       |
| 003-E5413      | WHEEL              | CIN          | 07/14/2014   | \$24.85  | \$27.90          | \$40.12 | 100.00 %         | 0                 | \$0       |
| 003-E5421      | WHEEL              | CIN          | 06/19/2014   | \$25.21  | \$28.19          | \$40.12 | 100.00 %         | 1                 | \$25      |
|                |                    |              |              |          |                  |         |                  |                   | \$946,325 |

## Accepted Example Values for use in the Format Column of the Column Chooser:

| Format Type | *Decimal Precision | Format Entry Value | Example Data Value | Example Displayed Value |
|-------------|--------------------|--------------------|--------------------|-------------------------|
| Currency    | 0                  | C0                 | 512.1              | \$512                   |
|             | 1                  | C1                 | 512.1              | \$512.1                 |
|             | 2                  | C2                 | 512.1              | \$512.10                |
| Numeric     | 0                  | N0                 | 512.1              | 512                     |
|             | 1                  | N1                 | 512.1              | 512.1                   |
|             | 2                  | N2                 | 512.1              | 512.10                  |
| Percentage  | 0                  | P0                 | 0.25               | 25%                     |
|             | 1                  | P1                 | 0.25               | 25.0%                   |
|             | 2                  | P2                 | 0.25               | 25.00%                  |
| Date        | 0                  | MM/DD/YY           | 04/20/2019         | 04/20/19                |
|             | 0                  | MM/DD/YYYY         | 04/20/2019         | 04/20/2019              |

\* If the need for 3 or 4 decimals is needed use the Format to 1 or 2 and the manually change it what is needed

Please call our PULSE support desk us with questions and comments at  
(513) 723-8095 or Support@PULSEDashboard.com

We encourage phone calls with suggestions for making our software function better for your organization. We also offer custom modifications, and if your suggestion is applicable to other users, it may be made at no charge.

Visit [www.PULSEDashboard.com](http://www.PULSEDashboard.com)

Copyright Notice: © 2020 an unpublished work by Leahy Consulting Inc., P.O. Box 11418, Cincinnati, Ohio USA 45211. Photocopying and sharing of this document is encouraged. Leahy Consulting is an independent ERP consulting firm and is not affiliated with Microsoft or Macola® software. We can be reached at (513) 723-8090.

**LEAHY** Independent ERP and Macola® Specialists  
**ERP SOLUTIONS** Expert Support/Optimization for 25 years  
Developer of Pulse Dashboard software